

## About us

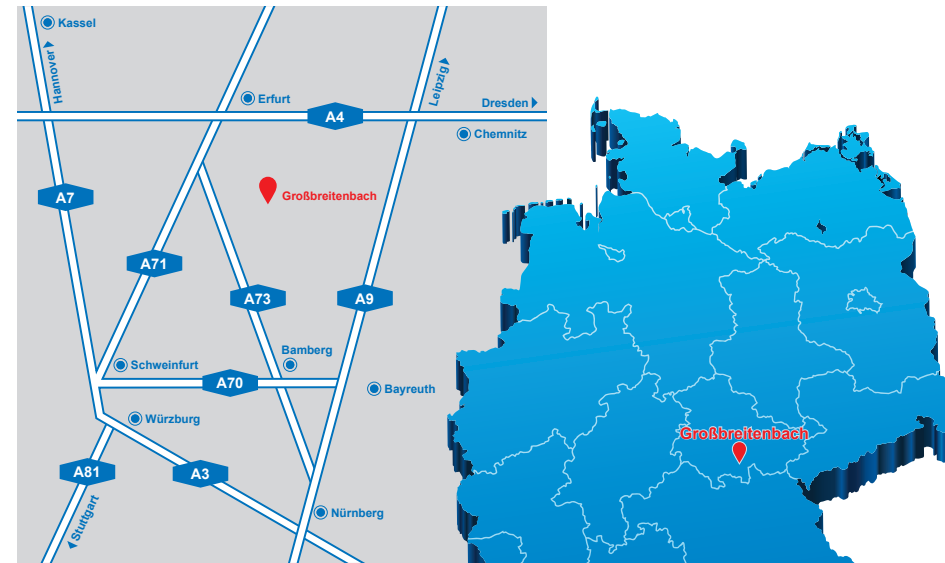
Since 1996 Standex-Meder Electronics has its own tool shop. It was founded, as a result of the growing demand for high precision quality tooling for our Reed Products as well as a means of expanding our customer service offering.

Our tool shop is a qualified and reliable partner providing customer support in the areas of planning, designing and constructing molding tools, punching tools and smaller pressure die-casting tools. Whether single piece or mass production tooling, a team of highly motivated and qualified employees will work with you to design and construct the tooling that is according to your specifications as agreed upon in the form of a written quotation. The most advanced techniques will be utilized in milling, wire eroding, die sinking and grinding, as well as a select grade of steel in connection with the ideal coating will be used to guarantee that the best quality and durability is achieved for the longest life of the tool. In general, sampling, optimizing and in-house maintenance are provided for all tooling as well as first sample and failure analysis reporting.



Custom  
Engineered  
Solutions for  
Tomorrow

Further information [meder.com/tooling.html](http://meder.com/tooling.html)



### StandexMeder Electronics GmbH

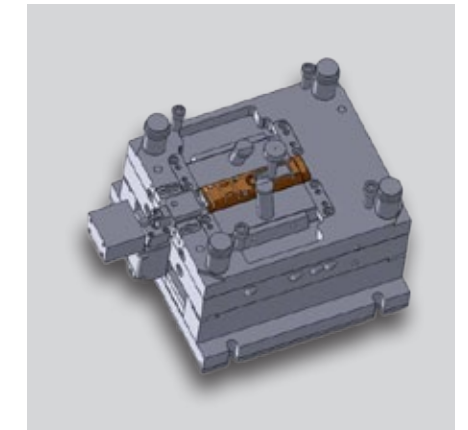
Ilmenauer Strasse 7i  
98701 Großbreitenbach/Germany  
Phone +49(0)3678 1273-16

Robert-Bosch-Strasse 4  
78224 Singen/Germany  
Phone +49(0)7731 8399-0

[tooling@standexmeder.com](mailto:tooling@standexmeder.com)



Custom  
Engineered  
Solutions for  
Tomorrow



## Tool shop

[standexmeder.com](http://standexmeder.com)

## Machines and equipments

**Sink EDM machine**  
**EXERON / INGERSOLL**  
 Machining stroke max. 620x420x400 mm



**Milling machine**  
**HERMLE / HURCO**  
 Machining stroke max. 760x600x610 mm

**Wire EDM machine**  
**SODICK / MITSUBISHI**  
 Machining stroke max. 530x370x265 mm

**Grinding machine**  
**ELB-SCHLIFF**  
 Machining stroke max. 800x400x475 mm



**Injection molding machine**  
**ARBURG**  
 Clamping force max. 750kN

**Automatic punching press**  
**PASU**  
 Pressing force max. 400kN

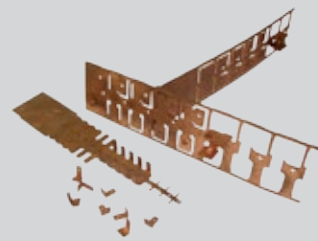
**Measuring machine**  
**ScanMax**  
 Machining stroke 450x450x400 mm

## Stamping tools

**Progressive stamping tools**  
 for lead frames



**Stamped parts**  
 for housing shields and contact pins



## Injection mold tools

**Design parts**  
 with high quality  
 surfaces



**Optical components**



**Technical molded parts**  
 Gearwheels, spindles, frames and holders



**Insert molded parts**

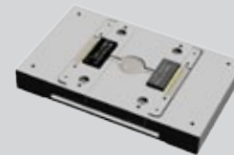


## Specific tools

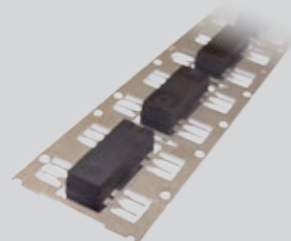
**Die-cast zinc tools**



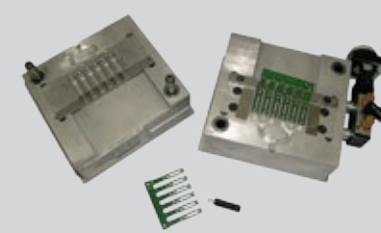
**Various types for prototyping,  
 molding and stamping**



**Transfer molding tools**



**Low-pressure injection molding**



## Machine and assembly services

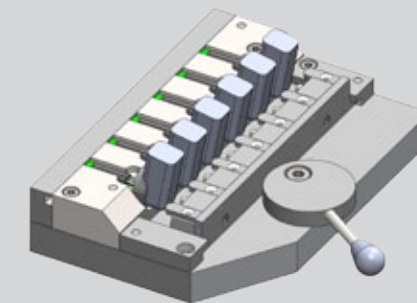
**Stainless steel tube machining**  
 cutting, laser welding, marking



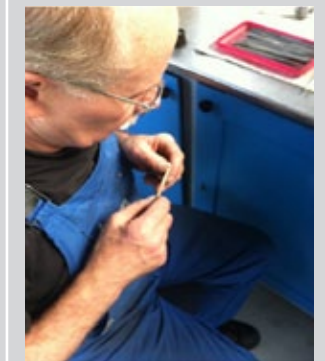
**Manufacturing of electrodes**  
 in copper or graphite



**Fixture design and production**



**Tooling repair and maintenance**



**Development, design  
 and construction**



**CNC design, simulation,  
 verification and integration**

